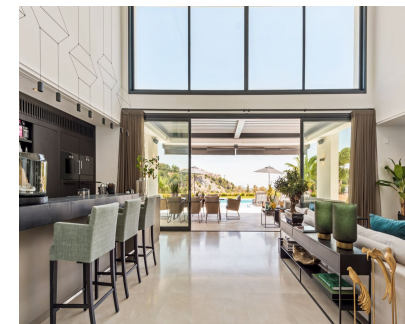
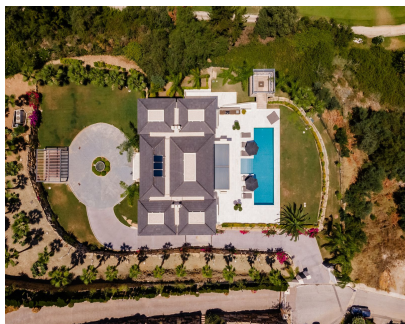


Sales - House - Benahavís
5.500.000€



Ref.-ID: R4392847

Benahavís

House



6



7



712 m2



3000 m2

Situated in one of the most exclusive and luxury areas of Spain, you can find this magnificent 6 bed 6 bath villa set on a flat plot (3000 m², built inside 712 m²) and top of the hill at the gated community of Los Almendros within the municipality of Benahavis. Overlooking the Los Arqueros golf course the house is offering unparalleled views of the Mediterranean coastline and Andalusian mountains. Just a 10 min drive from the prestigious Puerto Banus, where you can indulge in upscale shopping, fine dining and beach activities. The entrance with roundabout and a fountain can easily fit several cars underneath the semi-covered porch but there's also a large garage for another 4 vehicles. The property which was delivered in 2020 is distributed over 3 levels (with marble and parquet floors), defined as a basement with the garage, storage room, sauna, Turkish bath, gym with Technogym equipment and staff accommodation including kitchenette and ensuite bathroom. The groundfloor is offering a spacious entrance, formal dining room incl. wine cellar, an open-plan kitchen with Gaggenau appliances, intimate living room with beautiful high ceilings and two spacious en suite bedrooms. The large sliding glass windows give rise to open terrace spaces, the outside bbq area and the 17m long heated swimming pool. The elevator is giving access to every floor and brings us to the top floor that hosts the 65 m² extensive master suite with a spacious ensuite bathroom, dressing room and a private balcony for breathtaking sunrises and sea views. Also set on this level, from the open gallery with views on the groundfloor, there's a professional pool table and you can enter two more en suite (guest) bedrooms. This exceptional mansion including its amenities, style and distribution is made for peaceful enjoyment as well as entertaining your family, friends or guests in the very finest contemporary Mediterranean setting.

- Setting**
 - ✓ Frontline Golf
 - ✓ Close To Golf
 - ✓ Close To Town
 - ✓ Close To Schools
 - ✓ Close To Forest
 - ✓ Urbanisation
- Orientation**
 - ✓ East
 - ✓ South East
 - ✓ South
 - ✓ South West
- Condition**
 - ✓ Excellent
- Pool**
 - ✓ Private
 - ✓ Heated
- Climate Control**
 - ✓ Air Conditioning
 - ✓ Hot A/C
 - ✓ Cold A/C
 - ✓ Fireplace
 - ✓ U/F Heating
 - ✓ U/F/H Bathrooms
- Views**
 - ✓ Sea
 - ✓ Mountain
 - ✓ Golf
 - ✓ Panoramic
 - ✓ Garden
 - ✓ Pool
- Features**
 - ✓ Covered Terrace
 - ✓ Lift
 - ✓ Fitted Wardrobes
 - ✓ Private Terrace
 - ✓ WiFi
 - ✓ Gym
 - ✓ Sauna
 - ✓ Games Room
 - ✓ Guest Apartment
 - ✓ Storage Room
 - ✓ Utility Room
 - ✓ Ensuite Bathroom
 - ✓ Access for people with reduced mobility
 - ✓ Marble Flooring
 - ✓ Double Glazing
 - ✓ Staff Accommodation
 - ✓ Basement
 - ✓ Fiber Optic
- Furniture**
 - ✓ Fully Furnished
- Kitchen**
 - ✓ Fully Fitted
- Garden**
 - ✓ Private
 - ✓ Landscaped
- Security**
 - ✓ Gated Complex
 - ✓ Entry Phone
 - ✓ Alarm System
 - ✓ Safe
- Parking**
 - ✓ Garage
 - ✓ More Than One
 - ✓ Private
- Utilities**
 - ✓ Electricity
 - ✓ Drinkable Water
- Category**
 - ✓ Golf
 - ✓ Holiday Homes
 - ✓ Investment
 - ✓ Luxury
 - ✓ Resale
 - ✓ Contemporary