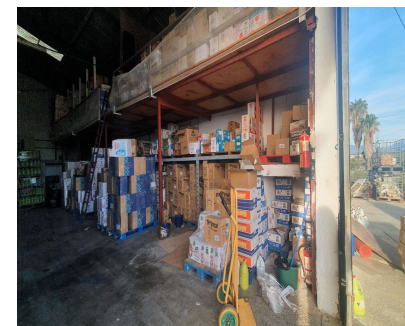
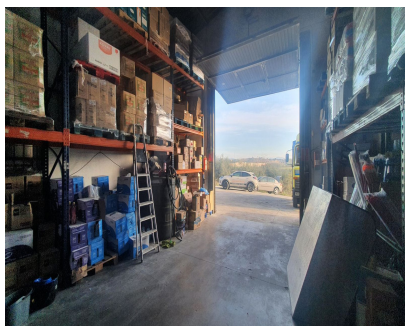
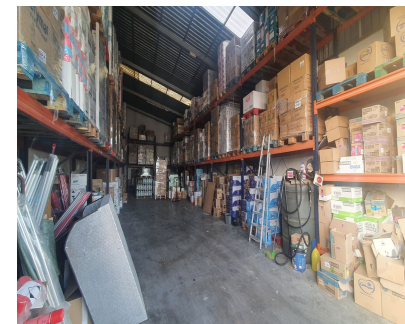


**Sales - Commercial - Coín**  
**295.000€**



**Ref.-ID: R4631353**

**Coín**

**Commercial**

**IBI: 314 EUR / year**



**1**



**567 m2**



**3000 m2**

Rustic Plot with Industrial Warehouses in a 3,000m<sup>2</sup> plot with AFO Certification thus providing legal compliance. The entire property is securely fenced. Key Features: Two Industrial Warehouses: The property comprises two single-storey industrial warehouses with a 495m<sup>2</sup> total constructed area. Warehouse 1 Amenities: Includes a bathroom and an office space of approximately 11m<sup>2</sup> on a mezzanine level, accessed via stairs. Additional Storage Spaces: There are two warehouses and two covered sheds, totalling 145m<sup>2</sup> (computed at 50% covered area). Water Storage: The property boasts three cisterns with capacities of 60,000 litres, 20,000 litres, and 10,000 litres, in addition to well water and town water sources. Easy Access: The property is easily accessible, facilitating varied use of the installations.

- Setting**
- ✓ Country
  - ✓ Close To Town

- Parking**
- ✓ Open
  - ✓ More Than One
  - ✓ Private

- Orientation**
- ✓ South
- Utilities**
- ✓ Electricity
  - ✓ Drinkable Water

- Condition**
- ✓ Good
- Category**
- ✓ Investment
  - ✓ Resale

- Views**
- ✓ Country

- Furniture**
- ✓ Not Furnished

- Kitchen**
- ✓ Not Fitted