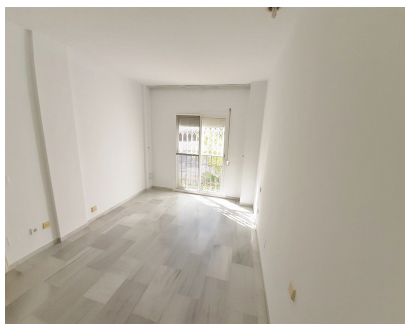


Sales - Apartment - Puerto Banús
505.000€



Ref.-ID: R4831390

Puerto Banús

Apartment

Community: 2,472 EUR / year

IBI: 900 EUR / year

Rubbish: 180 EUR / year



2



2



109 m2

"Bright beachside corner apartment located in one of the most prestigious and established residential developments of Puerto Banus. With a wonderful south facing terrace, views of the gardens and direct access to the community pool. One of the most attractive features of this luxurious urbanization is its unbeatable location. A short walk (300 meters) from the sandy beaches and the promenade that connects Marbella with Puerto Banús. The urbanization is a 10 minute walk from the center of Puerto Banús with its variety of luxury boutiques, El Corte Ingles, gourmet restaurants, cinemas and a nightlife for all tastes. EXCELLENT INVESTMENT!"

Setting

- ✓ Beachside
- ✓ Close To Shops
- ✓ Close To Sea
- ✓ Urbanisation

Features

- ✓ Covered Terrace
- ✓ Lift
- ✓ Near Transport

Orientation

- ✓ South

Furniture

- ✓ Not Furnished

Condition

- ✓ Restoration Required

Parking

- ✓ Underground
- ✓ Garage

Pool

- ✓ Communal

Category

- ✓ Investment

Climate Control

- ✓ Air Conditioning

Views

- ✓ Garden
- ✓ Pool