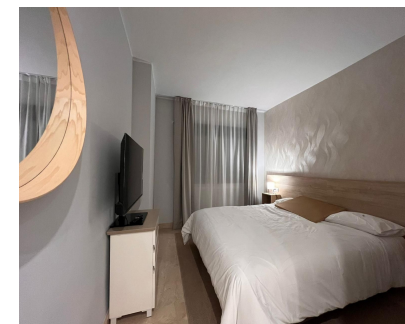


Sales - Apartment - Marbella
980.000€



Ref.-ID: R4954411

Marbella

Apartment



Ground Floor Apartment, Marbella, Costa del Sol. 3 Bedrooms, 2 Bathrooms, Built 150 m², Terrace 20 m². Setting : Town, Port, Close To Shops, Close To Sea, Close To Town, Close To Schools, Close To Marina, Urbanisation. Condition : Excellent. Pool : Communal, Children`s Pool. Climate Control : Air Conditioning, Hot A/C, Cold A/C. Views : Panoramic, Garden. Features : Covered Terrace, Lift, Fitted Wardrobes, Near Transport, Private Terrace, Satellite TV, WiFi, Paddle Tennis, Ensuite Bathroom, Access for people with reduced mobility, Marble Flooring, Double Glazing, 24 Hour Reception, Car Hire Facility, Fiber Optic. Furniture : Fully Furnished. Kitchen : Fully Fitted. Garden : Communal. Security : Gated Complex, Alarm System, 24 Hour Security, Safe. Parking : Underground, Covered, Street, More Than One, Communal, Private, EV charge point. Utilities : Electricity, Drinkable Water. Category : Holiday Homes, Luxury, Resale, Contemporary.

Setting

- ✓ Town
- ✓ Port
- ✓ Close To Shops
- ✓ Close To Sea
- ✓ Close To Town
- ✓ Close To Schools
- ✓ Close To Marina
- ✓ Urbanisation

Condition

- ✓ Excellent

Pool

- ✓ Communal
- ✓ Children`s Pool

Climate Control

- ✓ Air Conditioning
- ✓ Hot A/C
- ✓ Cold A/C

Views

- ✓ Panoramic
- ✓ Garden

Features

- ✓ Covered Terrace
- ✓ Lift
- ✓ Fitted Wardrobes
- ✓ Near Transport
- ✓ Private Terrace
- ✓ Satellite TV
- ✓ WiFi
- ✓ Paddle Tennis
- ✓ Ensuite Bathroom
- ✓ Access for people with reduced mobility
- ✓ Marble Flooring
- ✓ Double Glazing
- ✓ 24 Hour Reception
- ✓ Car Hire Facility
- ✓ Fiber Optic

Furniture

- ✓ Fully Furnished

Kitchen

- ✓ Fully Fitted

Garden

- ✓ Communal

Security

- ✓ Gated Complex
- ✓ Alarm System
- ✓ 24 Hour Security
- ✓ Safe

Parking

- ✓ Underground
- ✓ Covered
- ✓ Street
- ✓ More Than One
- ✓ Communal
- ✓ Private
- ✓ EV charge point

Utilities

- ✓ Electricity
- ✓ Drinkable Water

Category

- ✓ Holiday Homes
- ✓ Luxury
- ✓ Resale
- ✓ Contemporary