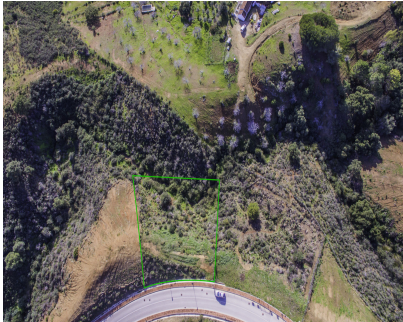


**Sales - Plot - La Cala Golf**  
**325.000€**

**www.arbatestates.com**  
**+34 606 84 36 45**  
**+34 602 51 80 97**  
**info@arbatestates.com**



**Ref.-ID: R2644706**

**La Cala Golf**

**Plot**



**1585 m2**

We offer a range of plots in La Cala Golf and La Mairena where you can enjoy complete peace and tranquillity, you are only a few minutes drive to the beautiful sandy beaches, fine restaurants and shops of the sophisticated area of Elviria or La Cala de Mijas. This is without doubt a place to build a fabulous villa of your dreams and a lifetime investment. Residential Plot, La Cala Golf, Costa del Sol. Sector 14 Plot 14 Garden/Plot 1585 m<sup>2</sup>. Buildable :317 m<sup>2</sup>t Setting : Frontline Golf, Suburban, Country, Mountain Pueblo, Close To Golf, Close To Shops, Close To Sea, Close To Schools, Close To Forest. Orientation : South. Condition : New Construction. Views : Sea, Mountain, Golf, Forest. Garden : Private. Category : New Development.

- Setting**
- ✓ Frontline Golf
  - ✓ Suburban
  - ✓ Close To Golf
  - ✓ Close To Forest

- Orientation**
- ✓ South

- Condition**
- ✓ New Construction

- Views**
- ✓ Sea
  - ✓ Mountain
  - ✓ Golf
  - ✓ Forest

- Garden**
- ✓ Private