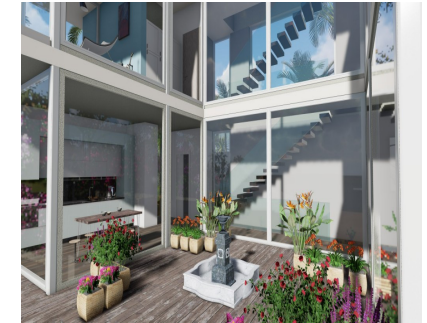


**Sales - House - Carib Playa**  
**1.800.000€**

**www.arbatstates.com**  
**+34 606 84 36 45**  
**+34 602 51 80 97**  
**info@arbatstates.com**



**Ref.-ID: R3812785**

**Carib Playa**

**House**



**5**



**4**



**270 m2**



**730 m2**

**Property Highlights** •Stunning contemporary-modern design •Sea views •Off-plan project, with opportunity to customise •Privileged location, yet close to amenities The Location  
 •In a small but very pleasant community of luxury villas and apartments, amidst stunning natural beauty and with views towards the Mediterranean Sea. •Surrounded by some of the most exclusive urbanisations in East Marbella. •Walking distance or very short drive to a commercial centre with pharmacy, several restaurants, health store and supermarket and gym •By car, it's 10 minutes to the centre of Marbella, 15 minutes to Puerto Banus. •Plenty of golf resorts and courses are nearby with Cabopino Golf & Santa Maria Golf just a stone's throw away. The Villa •Very spacious and exclusive luxury villa •South orientation, which is accentuated in the entire concept of the villa. •Elegant, contemporary-modern design, based on the fusion of comfort and luxury with the surrounding natural beauty •Stunning views towards the sea •Built with quality materials and with sophisticated details.  
 •Utmost care will be paid to the esthetical aspects whilst also paying utmost attention to create an eco-friendly, low maintenance home. •Opportunity to customize many aspects of the villa to your personal preferences. •Building license should be granted during summer 2020 •Construction completion time of about 6 to 8 months

**Setting**

- ✓ Beachside
- ✓ Close To Golf
- ✓ Close To Shops
- ✓ Close To Sea
- ✓ Close To Schools

**Kitchen**

- ✓ Fully Fitted

**Orientation**

- ✓ South

**Garden**

- ✓ Private

**Pool**

- ✓ Private

**Security**

- ✓ 24 Hour Security

**Climate Control**

- ✓ Hot A/C

**Parking**

- ✓ Covered

**Views**

- ✓ Sea
- ✓ Mountain
- ✓ Beach
- ✓ Pool

**Features**

- ✓ Near Transport
- ✓ Double Glazing