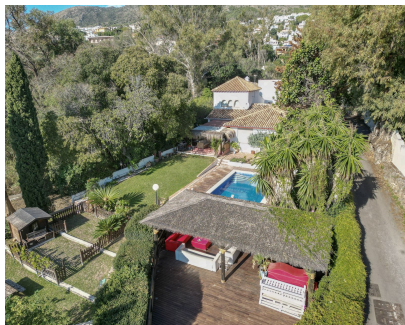


Sales - House - Benalmadena  
**1.495.000€**

[www.arbatstates.com](http://www.arbatstates.com)  
 +34 606 84 36 45  
 +34 602 51 80 97  
[info@arbatstates.com](mailto:info@arbatstates.com)



Ref.-ID: R4874836

Benalmadena

House

IBI: 1,600 EUR / year

Rubbish: 110 EUR / year



7



6



285 m2



3200 m2

Villa located in Benalmadena with 2 separate accommodations, previously run as a successful B&B and only 3,5km from the beach. The main house is distributed as follows: Entrance hall, fully equipped kitchen with a separate dining room and access to the terrace & gardens, 2 double bedroom, spectacular master bedroom with on suite bathroom and private sitting area, double bedroom with on suite bathroom. Separate accommodation n1: Private entrance, full apartment with a fully equipped kitchen, lovely sitting area with direct access to the garden, bathroom, and a double bedroom. Separate accommodation n2: Private entrance, studio with sitting area, bedroom, bathroom, and small kitchen The property is in good condition with mains water connection, Fiber optic, AC in all bedrooms and living room, heated swimming pool (salt), lovely garden and spectacular views of the sea and mountain. This property was previously run as a successful B&B. Year of construction: 1982 - IBI: 1600€ per year - Plot: 3200m2 - Living size: 283m2 The property is fully registered.

**Setting**

- ✓ Town
- ✓ Close To Shops
- ✓ Close To Sea
- ✓ Close To Town
- ✓ Close To Schools

**Features**

- ✓ Covered Terrace
- ✓ Fitted Wardrobes
- ✓ Near Transport
- ✓ Private Terrace
- ✓ WiFi
- ✓ Guest Apartment
- ✓ Storage Room
- ✓ Utility Room
- ✓ Ensuite Bathroom
- ✓ Barbeque
- ✓ Fiber Optic

**Category**

- ✓ Bargain
- ✓ Resale

**Orientation**

- ✓ South
- ✓ South West
- ✓ West

**Furniture**

- ✓ Part Furnished

**Condition**

- ✓ Good

**Kitchen**

- ✓ Fully Fitted

**Pool**

- ✓ Private
- ✓ Heated

**Garden**

- ✓ Private

**Climate Control**

- ✓ Air Conditioning
- ✓ Hot A/C
- ✓ Cold A/C

**Parking**

- ✓ Garage
- ✓ Private

**Views**

- ✓ Sea
- ✓ Mountain
- ✓ Country
- ✓ Panoramic
- ✓ Garden

**Utilities**

- ✓ Electricity
- ✓ Drinkable Water