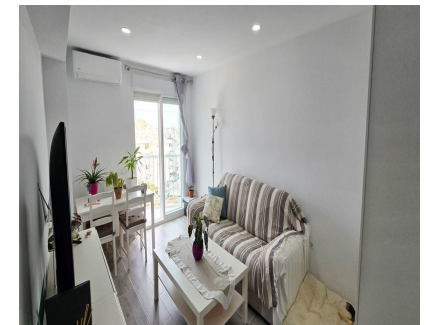


Sales - Apartment - Benalmadena Costa
210.000€

www.arbatstates.com
+34 606 84 36 45
+34 602 51 80 97
info@arbatstates.com



Ref.-ID: R4875817

Benalmadena Costa

Apartment

Community: 1,560 EUR / year

IBI: 275 EUR / year

Rubbish: 165 EUR / year



1



1



49 m2

Stunning Modern Turn-Key Apartment in Arroyo de la Miel - Ideal Investment with Sea Views Experience the ultimate apartment with this beautifully renovated 6th-floor apartment in the vibrant heart of Benalmádena. Fully modernized and tastefully decorated, this turn-key property offers spectacular sea and mountain views, ready for immediate enjoyment. Perfectly located just a short stroll from the beach and the bustling Arroyo de la Miel area, this apartment provides unparalleled convenience, with the local train station just minutes away and Málaga Airport a quick 30-minute train ride. It's the ideal spot for both holidaymakers and investors looking for a prime location on the Costa del Sol. This one-bedroom, one-bathroom apartment is a dream for renters and holiday guests alike. The spacious living area is bathed in natural light, while the large, fully equipped kitchen offers a welcoming space for dining and entertaining. The development features a communal pool, complete with a poolside snack bar, perfect for sun-soaked relaxation. Residents enjoy access to well-maintained communal gardens, shared parking, and a secure, manned reception area, ensuring a safe and comfortable environment. While this property does not currently hold a tourist license, the development is highly popular among investors for its exceptional rental potential, making it a smart choice for those seeking returns in the thriving Benalmádena market. Priced attractively at €210,000, this apartment is a rare find and is expected to move quickly. Contact us today to schedule a viewing and secure your piece of paradise in this highly desirable location.

Setting

- ✓ Close To Port
- ✓ Close To Shops
- ✓ Close To Sea
- ✓ Close To Town
- ✓ Close To Schools
- ✓ Close To Marina

Features

- ✓ Lift
- ✓ Fitted Wardrobes
- ✓ Near Transport

Utilities

- ✓ Electricity

Orientation

- ✓ South East

Furniture

- ✓ Part Furnished

Category

- ✓ Resale

Condition

- ✓ Excellent

Kitchen

- ✓ Fully Fitted

Pool

- ✓ Communal

Garden

- ✓ Communal

Climate Control

- ✓ Air Conditioning

Security

- ✓ 24 Hour Security

Views

- ✓ Sea

Parking

- ✓ Street