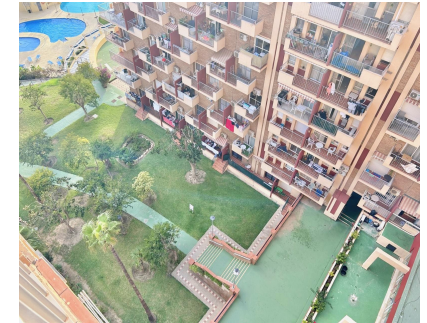


Sales - Apartment - Benalmadena
285.000€

www.arbatestates.com
+34 606 84 36 45
+34 602 51 80 97
info@arbatestates.com



Ref.-ID: R4926061

Benalmadena

Apartment

Community: 1,500 EUR / year

IBI: 200 EUR / year

Rubbish: 172 EUR / year



1



1



55 m2

Apartment on the Eighth Floor of Edificio Minerva, Gamonal, Benalmádena – Ideal for Living or Investment This one-bedroom property stands out for its strategic location in one of Benalmádena's most dynamic areas, currently undergoing renovation, which enhances its medium- and long-term value. Situated on the eighth floor, the apartment offers unobstructed views and excellent natural light thanks to its orientation. Its location makes it particularly appealing: just a short walk from the beach, close to Parque de la Paloma, and surrounded by amenities such as supermarkets, pharmacies, restaurants, and public transportation. The area also offers easy access to the highway, providing quick connections to Málaga, the airport, and other towns along the Costa del Sol. Edificio Minerva is part of a well-established community featuring extensive common areas with gardens, a large swimming pool, and a reception service. These features make it an ideal place for both residents and tourists. This is a secure investment opportunity with high potential as a holiday rental, thanks to the growing tourist demand on the Costa del Sol and the renewed appeal of the area. Don't miss this perfect chance to benefit from Benalmádena's booming real estate market!

Setting <ul style="list-style-type: none">✓ Town✓ Close To Shops✓ Close To Sea✓ Close To Town✓ Close To Schools✓ Urbanisation	Orientation <ul style="list-style-type: none">✓ South West	Condition <ul style="list-style-type: none">✓ Good	Pool <ul style="list-style-type: none">✓ Communal	Climate Control <ul style="list-style-type: none">✓ Air Conditioning✓ Hot A/C✓ Cold A/C	Views <ul style="list-style-type: none">✓ Sea✓ Mountain✓ Panoramic✓ Pool
Features <ul style="list-style-type: none">✓ Lift✓ Fitted Wardrobes✓ Near Transport✓ Private Terrace✓ WiFi✓ Access for people with reduced mobility✓ 24 Hour Reception✓ Near Church✓ Fiber Optic	Furniture <ul style="list-style-type: none">✓ Optional	Kitchen <ul style="list-style-type: none">✓ Fully Fitted	Garden <ul style="list-style-type: none">✓ Communal	Security <ul style="list-style-type: none">✓ 24 Hour Security	Parking <ul style="list-style-type: none">✓ Street
Utilities <ul style="list-style-type: none">✓ Electricity✓ Drinkable Water	Category <ul style="list-style-type: none">✓ Holiday Homes✓ Investment				