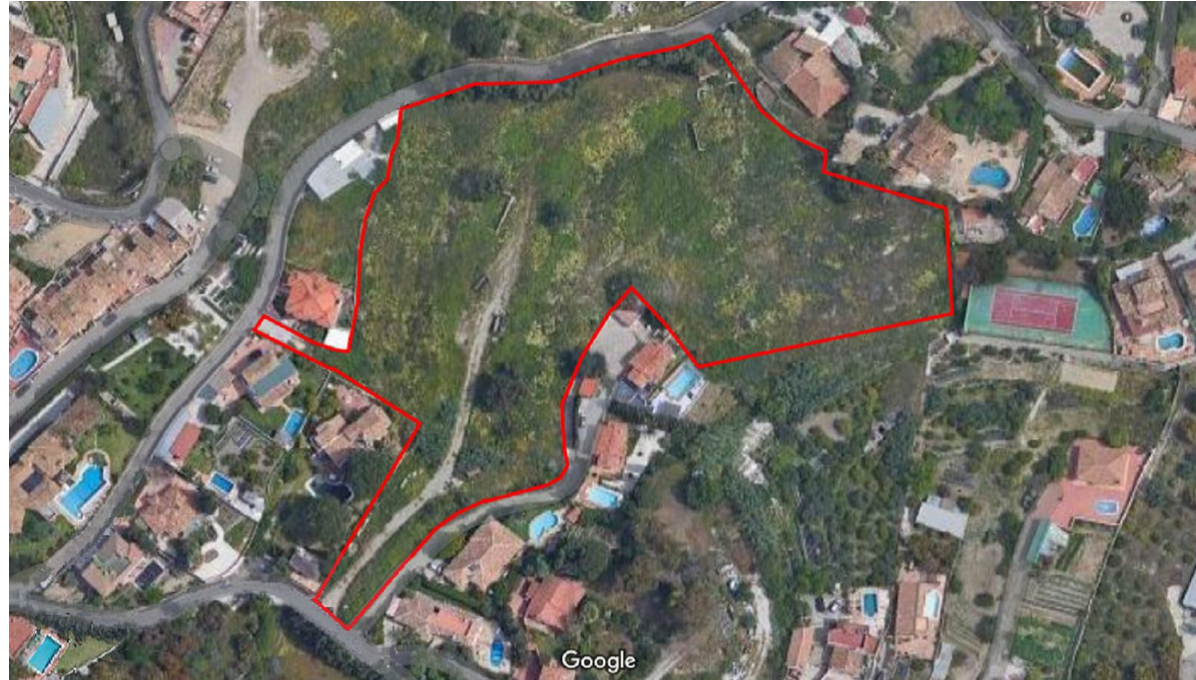


Sales - Plot - Benalmadena
3.500.000€

www.arbatstates.com
+34 606 84 36 45
+34 602 51 80 97
info@arbatstates.com



Ref.-ID: R5005372

Benalmadena

Plot



15668 m2

Incredible plot for sale for single-family use, such as semi-detached or independent chalets, each property with the possibility of having a private pool and garage, at the same time the urbanization can have a community pool, two tennis courts and playgrounds for children. All the houses would obtain a panoramic view of the Mediterranean. In turn, the land has a privileged location, being only 10 minutes walking to the center of Benalmádena town or 3 minutes by car, the nearest beach is only 5 minutes by car and in less than 20 minutes you reach to Malaga airport, it is also an area highly demanded by foreigners. The features are as follows: ID: - Total area: 15,667.96 m2 - Building space: 3,290, 31 m2t - Number of houses: 20 - Average buildability: 0.21 m2t/m2s Delivery area: - Characteristic use: Single-family - Typical use: 0.286 m2/m2 Weighting coefficients: - Usage: Coefficient - Single family: 1.00 - Town: 0.71 CONDITIONS OF USE: - Actuation system: Compensation - Detailed study: Compulsory - Urbanization project: Compulsory Transfers: - Infrastructures: 0.00 m2 - Free spaces G: 0.00 m2 - Free spaces L: 190.70 m2 - Various: 3,322, 94 m2 - Total assignments: 3,513, 64 m2 / 22.46%

Setting

- ✓ Close To Golf
- ✓ Close To Shops
- ✓ Close To Sea
- ✓ Close To Schools
- ✓ Close To Forest
- ✓ Urbanisation

Orientation

- ✓ North
- ✓ East
- ✓ South
- ✓ West

Condition

- ✓ New Construction

Pool

- ✓ Communal
- ✓ Private
- ✓ Room For Pool
- ✓ Children`s Pool

Views

- ✓ Sea
- ✓ Mountain
- ✓ Country
- ✓ Panoramic
- ✓ Garden
- ✓ Pool
- ✓ Urban
- ✓ Street

Features

- ✓ Covered Terrace
- ✓ Lift
- ✓ Fitted Wardrobes
- ✓ Private Terrace
- ✓ Solarium
- ✓ Satellite TV
- ✓ Gym
- ✓ Sauna
- ✓ Games Room
- ✓ Tennis Court
- ✓ Storage Room
- ✓ Utility Room
- ✓ Ensuite Bathroom
- ✓ Wood Flooring
- ✓ Access for people with reduced mobility
- ✓ Marble Flooring
- ✓ Jacuzzi
- ✓ Bar
- ✓ Double Glazing

Furniture

- ✓ Optional

Garden

- ✓ Communal
- ✓ Private
- ✓ Landscaped
- ✓ Easy Maintenance

Security

- ✓ Gated Complex

Parking

- ✓ Underground
- ✓ Garage
- ✓ Covered
- ✓ Private

Utilities

- ✓ Electricity
- ✓ Drinkable Water
- ✓ Telephone
- ✓ Gas
- ✓ Photovoltaic solar panels
- ✓ Solar water heating

Category

- ✓ Investment
- ✓ Off Plan
- ✓ With Planning Permission