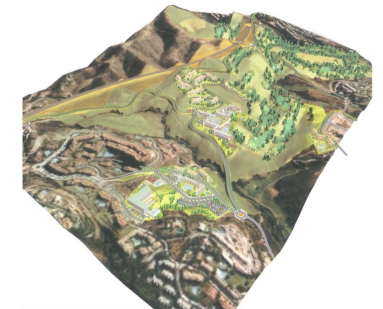
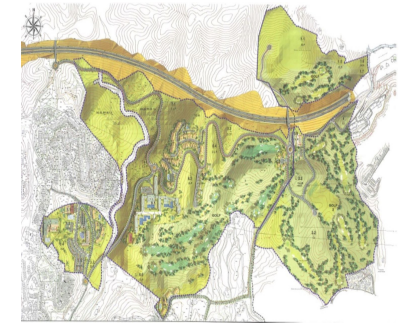
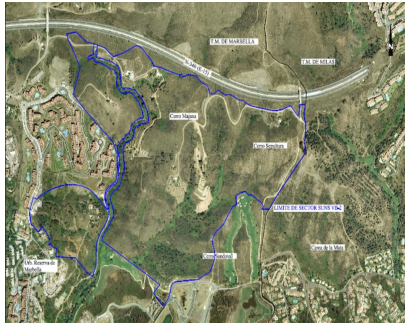


**Продажа - Участок - Las Chapas**  
**2.146.000€**

**www.arbatestates.com**  
**+34 606 84 36 45**  
**+34 602 51 80 97**  
**info@arbatestates.com**



**Ref.-ID: R4360702**

**Las Chapas**

**Участок**



**21458 m2**

This sector has a total area of 710,458 m<sup>2</sup>, of which 21,458 m<sup>2</sup> corresponds to this farm. It represents 3.02% of rights and obligations. The sector has a buildable area of 57,234.29 m<sup>2</sup> for Free Income Housing IN LOW DENSITY, 380 houses in Poblado Mediterráneo and 11 isolated houses. Buildable area of 40,362 m<sup>2</sup> for Hotels. 3,000 m<sup>2</sup> Economic Activities Golf Club and Commercial Area Which makes a total of 100,596.29 m<sup>2</sup> of surface area. Therefore 100,596.29 m<sup>2</sup> x 3.02% = 3,038 m<sup>2</sup> of buildable area, which would correspond to this plot.

**ОРИЕНТАЦИЯ**

- ✓ Восток
- ✓ Юго-восток
- ✓ Юг
- ✓ Юго-запад
- ✓ Запад

**ВИД**

- ✓ Море
- ✓ Горы
- ✓ Гольф
- ✓ Панорамный

**Категория**

- ✓ Перепродажа